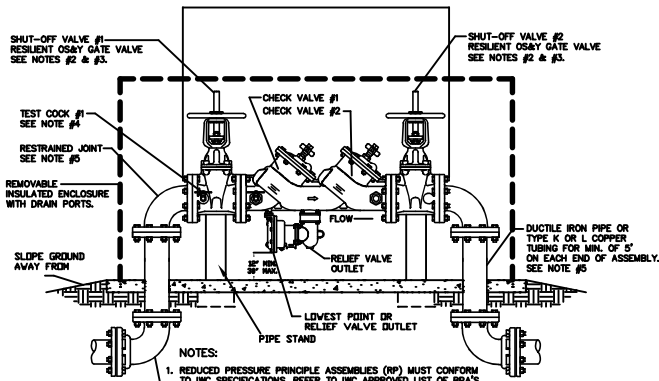


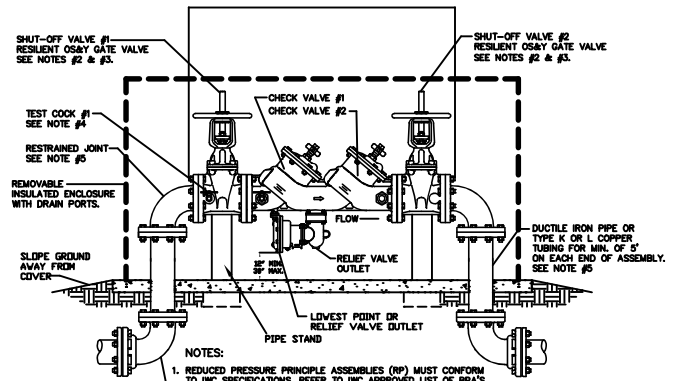
**2" REDUCED PRESSURE PRINCIPLE ASSEMBLY**



**NOTES:**

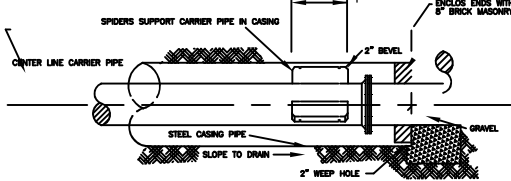
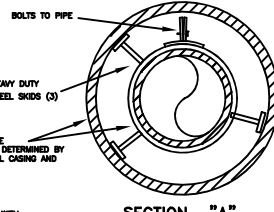
1. REDUCED PRESSURE PRINCIPLE ASSEMBLIES (RP) MUST CONFORM TO IWC SPECIFICATIONS. REFER TO IWC APPROVED LIST OF BPA'S.
2. IWC APPROVED RP INCLUDES SHUT-OFF VALVES #1 AND #2 AS PART OF THE ASSEMBLY. NO SUBSTITUTIONS SHALL BE PERMITTED.
3. FIRE LINE SERVICES SHALL HAVE OUTSIDE STEM AND YOKE (OS & Y) HANDWHEEL OPERATORS. IF SERVING FIRE SPRINKLERS, TAMPER SWITCHES ARE REQUIRED.
4. TEST COCK #1 SHALL BE UPSTREAM OF SHUT-OFF VALVE #1 AND IS PART OF THE APPROVED ASSEMBLY.
5. PIPE MATERIAL AND FITTINGS SHALL BE AS SPECIFIED IN IWC STANDARDS SPECIFICATION. ALL JOINTS SHALL BE RESTRAINED WITH MEGALUG RESTRAINTS OR APPROVED EQUAL.
6. 6" - 10" RP SHALL BE SUPPORTED AT CENTER WITH PIPE STAND AND SHALL NOT BLOCK RELIEF VALVE ON DRAIN PORT.
7. INSULATED ENCLOSURE SHALL BE AS SPECIFIED IN IWC ENCLOSURE INFORMATION.
8. ALL LOCATIONS FOR BPA'S REQUIRE IWC APPROVAL.
9. THERE SHALL BE NO TAPS, PIPING BRANCHES, UNAPPROVED BYPASS PIPING, HYDRANTS, FIRE DEPT. CONNECTION POINTS, OR OTHER WATER-USING APPURTENANCES CONNECTED TO THE SUPPLY LINE BETWEEN ANY WATER METER AND ITS IWC-REQUIRED BACKFLOW PREVENTER.
10. ALL BELOW GROUND FITTINGS TO BE M.J. RESTRAINT FITTINGS.
11. OPEN LEFT, CLOSE RIGHT ON ALL VALVES.

**6" REDUCED PRESSURE PRINCIPLE ASSEMBLY**

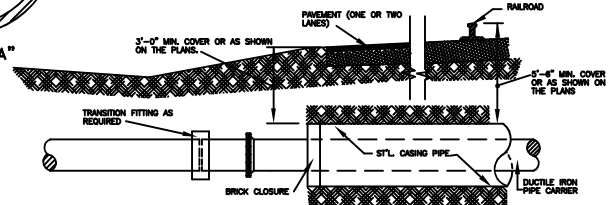


**NOTES:**

1. REDUCED PRESSURE PRINCIPLE ASSEMBLIES (RP) MUST CONFORM TO IWC SPECIFICATIONS. REFER TO IWC APPROVED LIST OF BPA'S.
2. IWC APPROVED RP INCLUDES SHUT-OFF VALVES #1 AND #2 AS PART OF THE ASSEMBLY. NO SUBSTITUTIONS SHALL BE PERMITTED.
3. FIRE LINE SERVICES SHALL HAVE OUTSIDE STEM AND YOKE (OS & Y) HANDWHEEL OPERATORS. IF SERVING FIRE SPRINKLERS, TAMPER SWITCHES ARE REQUIRED.
4. TEST COCK #1 SHALL BE UPSTREAM OF SHUT-OFF VALVE #1 AND IS PART OF THE APPROVED ASSEMBLY.
5. PIPE MATERIAL AND FITTINGS SHALL BE AS SPECIFIED IN IWC STANDARDS SPECIFICATION. ALL JOINTS SHALL BE RESTRAINED WITH MEGALUG RESTRAINTS OR APPROVED EQUAL.
6. 6" - 10" RP SHALL BE SUPPORTED AT CENTER WITH PIPE STAND AND SHALL NOT BLOCK RELIEF VALVE ON DRAIN PORT.
7. INSULATED ENCLOSURE SHALL BE AS SPECIFIED IN IWC ENCLOSURE INFORMATION.
8. ALL LOCATIONS FOR BPA'S REQUIRE IWC APPROVAL.
9. THERE SHALL BE NO TAPS, PIPING BRANCHES, UNAPPROVED BYPASS PIPING, HYDRANTS, FIRE DEPT. CONNECTION POINTS, OR OTHER WATER-USING APPURTENANCES CONNECTED TO THE SUPPLY LINE BETWEEN ANY WATER METER AND ITS IWC-REQUIRED BACKFLOW PREVENTER.
10. ALL BELOW GROUND FITTINGS TO BE M.J. RESTRAINT FITTINGS.
11. OPEN LEFT, CLOSE RIGHT ON ALL VALVES.



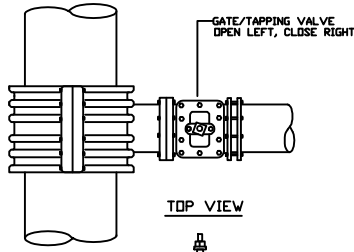
**ELEVATION**



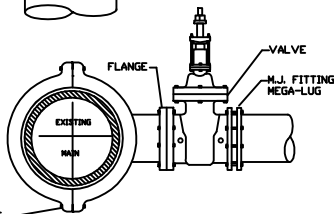
**PROFILE**

**BORING & JACKING DETAIL**

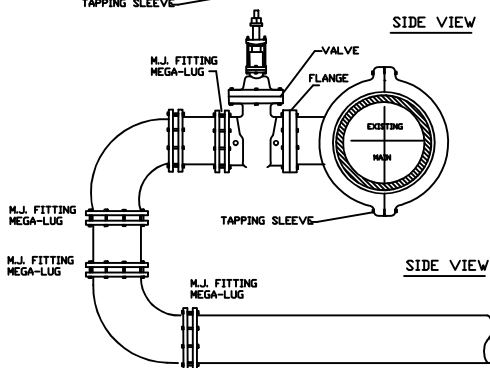
**TAPPING SLEEVE & VALVE DETAIL  
ROMAC INDUSTRIES, "SST-MJ" OR SSTIII-MJ**



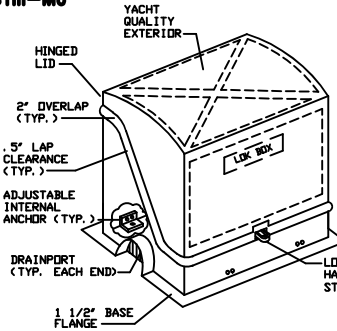
**TOP VIEW**



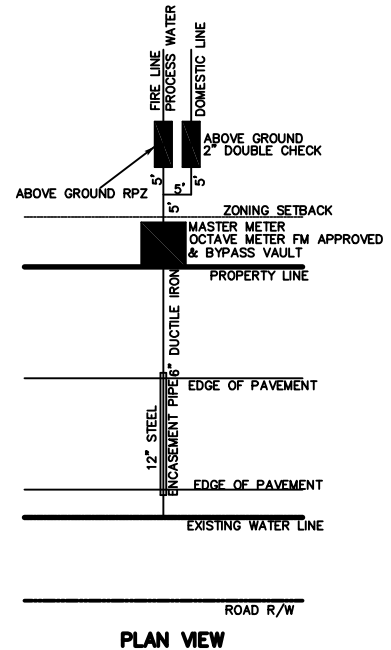
**SIDE VIEW**



**SIDE VIEW**



**STANDARD 'HOT BOX ENCLOSURE'  
Hot Box**



**PLAN VIEW**



**IREDELL WATER CORPORATION**  
 P.O. BOX 711  
 571 JENNINGS ROAD  
 STATESVILLE, NC 28687  
 PHONE: (704) 876-0672